

MONTHLY MEMBERSHIP PROGRESS REPORT

District 3234H1

Results as of: 12/31/2023

GMT:

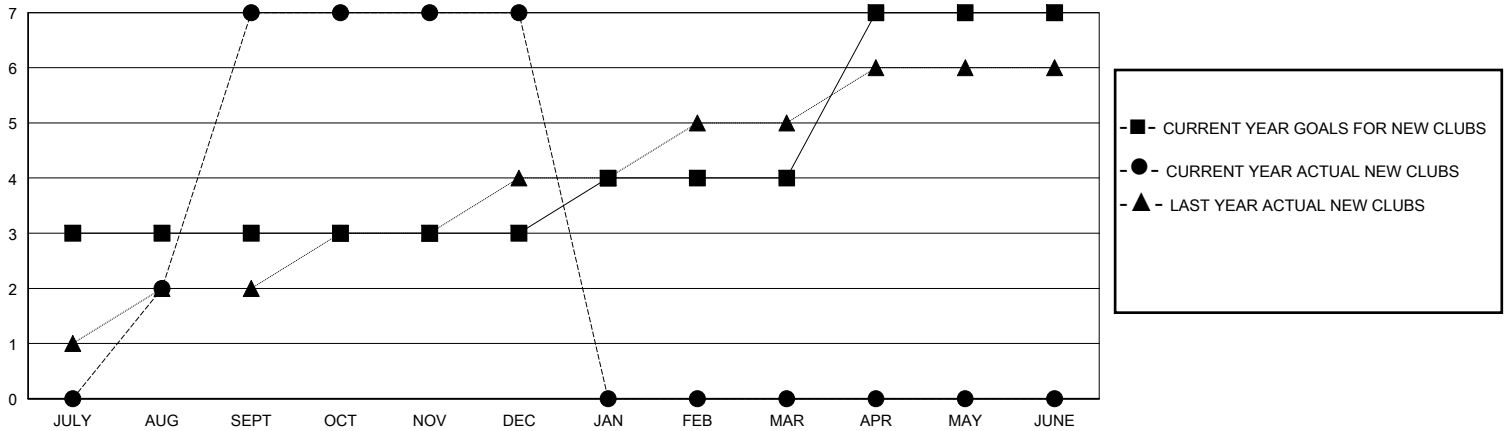
LOCATION INDIA

GMT CA

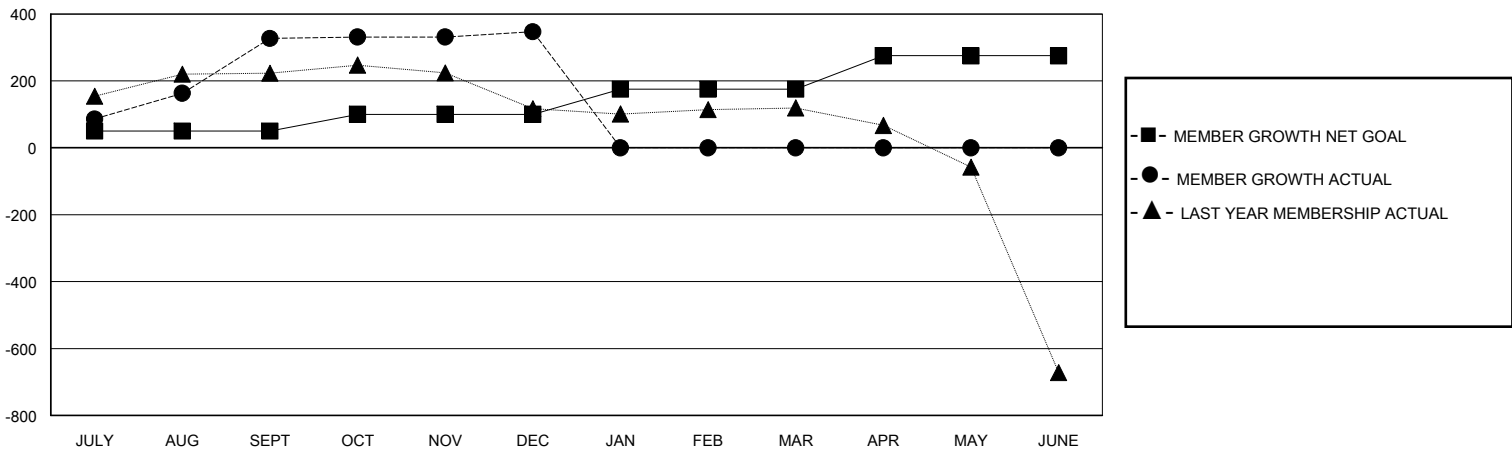
Clubs			
RESULTS FOR 2023-2024			
QUARTER	NEW CLUB GOAL	NEW CLUBS	DROPPED CLUBS
JULY/AUG/SEPT	3	7	0
OCT/NOV/DEC	0	0	1
JAN/FEB/MAR	1	0	0
APR/MAY/JUNE	3	0	0

Members			
RESULTS FOR 2023-2024			
QUARTER	MEMBER GROWTH NET GOAL	MEMBER GROWTH ACTUAL	DROPPED MEMBERS ACTUAL (including transfers)
JULY/AUG/SEPT	50	423	83
OCT/NOV/DEC	50	139	103
JAN/FEB/MAR	75	0	0
APR/MAY/JUNE	100	0	0

GOALS AND ACTUAL NEW CLUBS CUMULATIVE



GOALS AND ACTUAL MEMBERS CUMULATIVE



DROPPED CLUBS: 1

69 CLUBS OF 107 ADDED 1 OR MORE NEW MEMBERS

GENDER DISTRIBUTION

MALE 2,328 (61.33%)
FEMALE 1,467 (38.65%)

DROPPED MEMBERS

DECEASED	1
CLUB CANCELLED	20
OTHER	165
TOTAL	186

[CLICK HERE FOR CUMULATIVE MEMBERSHIP DATA](#)

TOTAL FAMILY UNIT MEMBERS	2,550
FAMILY MEMBERS PAYING HALF DUES	1,361